

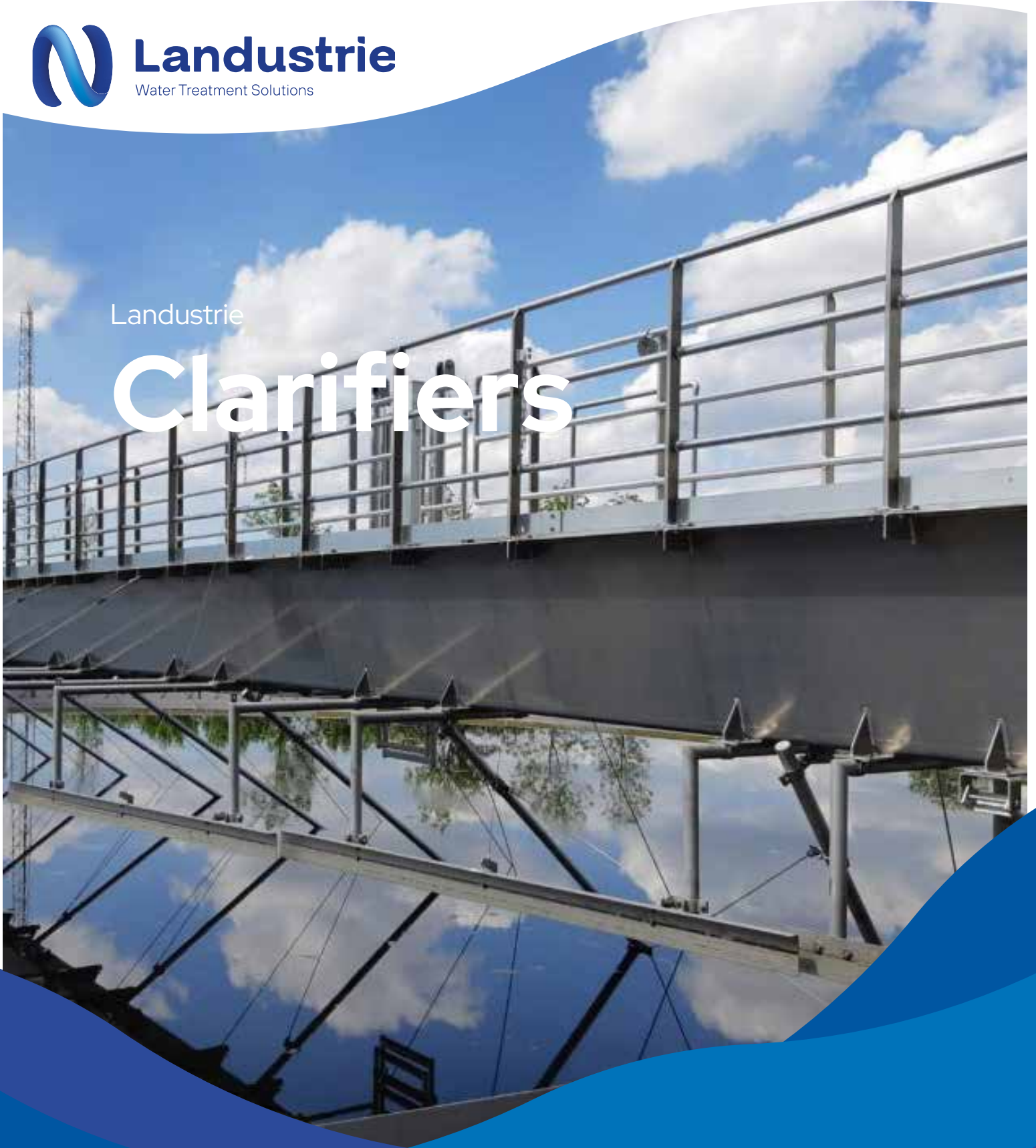


**Landustrie**

Water Treatment Solutions

Landustrie

# Clarifiers

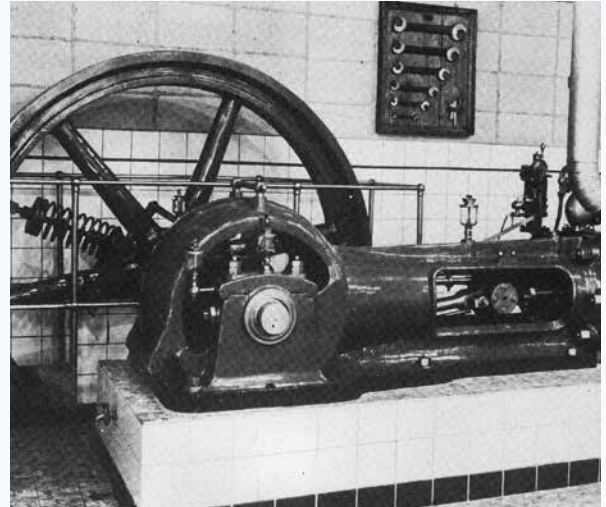


# Over 250 years of experience

## *2025 : a new name, familiar craftsmanship*

The journey of our collective “water power” began in 1880 with the foundation of Hubert, followed by the establishment of Landustrie in 1913. Since the early days of our shared history, Frisian craftspeople have been developing sustainable solutions in our water world. In 2011, the addition of Desah’s innovative capabilities further strengthened our commitment to reliable quality.

Now, we begin a new chapter together. Noarding combines the strength of three brands: Desah, Hubert, and Landustrie. This enables us to supply futureproof water technology solutions across the entire water cycle.



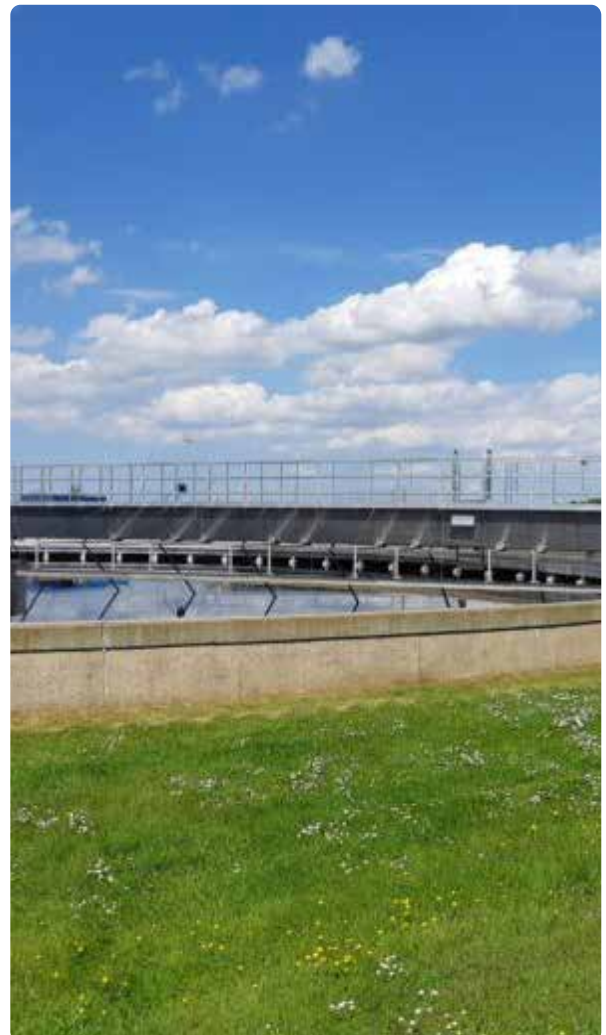
## Landustrie clarifier

A clarifier, also called scraper bridge, is a mechanical construction that is an important part of a water treatment plant. Sedimentation basins or settling tanks can be provided with a clarifier or scraper bridge. The purpose of this installation for clearing sediment into a sludge tank and to remove all floating substances.

We design high quality aluminium clarifiers to accommodate the most challenging influent profiles and treatment standards. Our clarifiers are adapted to your project specification, based on standard components.

In addition, they meet common standards set by prescribing authorities.

The clarifier can be supplied with either a peripheral drive system or a central drive unit. Commonly used materials are a combination of aluminium (above water) and stainless steel.





## Options

- Feedwell (inlet drum)
- Obstacle and/or slip protection
- Weirs and baffles, deflection plate

## Peripheral drive clarifier

Our clarifiers come standard with a two-wheeled carrier. One wheel is directly driven by a motor reduction gear. In the centre of the tank, the bridge is supported by a ball thrust bearing.

Various types of bridge beams can be provided:

- Tubular beam
- Plate beam
- Profile beam
- Trapezium beam (aluminium)

These beams can be supplied as follows:

- Half bridge: the peripheral side is fitted with a two-wheeled carrier
- Two-third bridge: the peripheral side is fitted with a two-wheeled carrier

## Central drive clarifier

For tanks with a diameter up to 50 m, a central drive system can be used. The drive features a special drive unit fitted to the shaft or cage which can be equipped with an overload sensor. The scraper arms are fitted with blades and are connected to the drive unit by means of a shaft or cage.

## Benefits

Unlike other designs, our scraper system does not rest on wheels over the tank bottom. There is no contact with the bottom (with the exception of the rubber strip), wear to the bottom of the tank is not an issue and risks of malfunction during operation are minimized.

# Preparation & design

Already from the first design, our engineers can guide you. Assisting with the design, layout, materials, all can be done with the cooperation of the experienced engineers.

As no two sites or projects are alike, early engagement with our engineers, will in the end lead to a top class sludge treatment.

# Installation & commissioning

Our teams are renowned for the quality of work in the field. Under any condition, the installation teams are able to deliver high quality and fast solutions. On-site tuning to your specific site characteristics is one of the skills of the team.

The Landustrie clarifiers can always be installed by our specialised installation teams. Another option is the use of our supervisors, who will ensure proper installation of the thickener, together with a local team.



# Refurbishment

We can restore the quality, performance and reliability of any clarifier, including those delivered by other manufacturers. This could also lead to a more cost and energy efficient installation than what was originally supplied.

The refurbishment route always starts with an analysis of the current system demands and status of the installation. Then either renovation of the current clarifier and parts will be advised or (a partially) renewal. The end result will be the same, an upgraded clarifier and ready to serve you for the years to come!

# After sales

The knowledge of the manufacturing process and the decades of experience of operating and maintaining makes us the clear choice to provide full after sales support. The after sales is not restraint to spare parts only, but includes all from repairs and problem solving, to maintenance, training and upgrades.

We even can optimise and refurbish your existing equipment.

For more information:

[AFTERSALES@NOARDLING.NL](mailto:AFTERSALES@NOARDLING.NL)



## Expertise

Using the experience of installing numerous clarifiers, our team of experts is available for your service. Our staff understand and are able to analyse the complete plant processes in order to increase the effectiveness of any clarifier.

In case of any problems one of our experts can observe, analyse and find the root cause of the problem.

Together with you as a client, the team of experts will work towards finding the solution and solving the issue.

## Maintenance

Both preventive and if required, corrective maintenance for the installation, can be provided by us. With a special service department, maintenance routines can be scheduled together, likewise urgent repairs can be handled by us straight away, when and wherever they may occur.

Furthermore, replacement parts are easily available and can be quickly dispatched to your site for quick maintenance, ensuring the all important system up-time is achieved.





# Landustrie

Water Treatment Solutions

## Landustrie is part of Noardling

PO Box 199, 8600 AD Sneek, The Netherlands

T. +31 (0)515 48 68 88

E. [info@noardling.com](mailto:info@noardling.com)

W. [www.noardling.com](http://www.noardling.com)

A. Pieter Zeemanstraat 6, Sneek

## Our Water Cycle

From water intake systems to water cooling, from water management to wastewater treatment, hydropower, pumping installations, and award-winning innovations in the field of decentralised wastewater treatment, discover the water cycle here by scanning the QR-code.



# Noardling

Futureproof Water Technology

The Noardling company is engaged in Futureproof Water Technology. With more than 250 years of experience in moving and treating of water.

## Noardling brands:



Desah

Decentralised Wastewater  
Solutions



Hubert

Water Screening  
Solutions



Landustrie

Water Treatment  
Solutions