

Landustrie

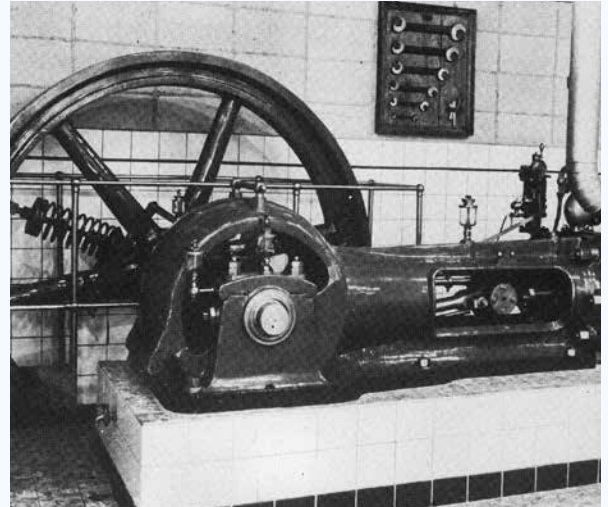
Central drive

Over 250 years of experience

2024 : a new chapter begins

The journey of our collective “water power” began in 1880 with the foundation of Hubert, followed by the establishment of Landustrie in 1913. Since the early days of our shared history, Frisian craftspeople have been developing sustainable solutions in our water world. In 2011, the addition of Desah’s innovative capabilities further strengthened our commitment to reliable quality.

As of 2024, we have begun a new chapter together. Noarding now combines the strength of three brands: Desah, Hubert, and Landustrie. This enables us to supply futureproof water technology solutions across the entire water cycle.



Landustrie central drive

for clarifiers and thickeners

As a respected worldwide supplier of waste water treatment equipment, we provide drive units with outstanding performance under most hostile environmental conditions. Decades of experience helps us to design and produce our products in our own manufacturing facility in the Netherlands. As manufacturer of clarifiers and thickeners applied for liquid-solids separation, we are able to supply complete installations including drives based on your custom specifications.

Applications

A central drive system can be used for tanks with a diameter up to 50 m. We supply retrofits for Dorr-Oliver, Eimco, Westech and comparable drives.



New and overhaul projects

We are able to design and produce central drive units for your specific application, for refurbishments and new builds. We are strong in tailoring a drive to your existing situation and in renovation projects we can design a new drive that completely replaces the old drive. We manufacture central drive units in our own factory. We can also install and mount your drive on site.



Features and benefits

- Complete package, clarifier or thickener with central drive unit
- Custom built by in-house engineering and production
- High-quality (incl. ATAX & CE) for a reliable and long service life
- World-wide service from our experienced service team
- Low OPEX, competitive pricing

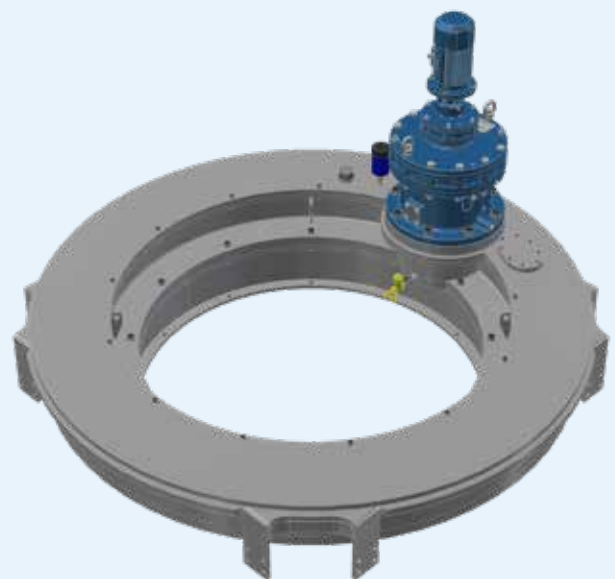
Design and construction

This column-mounted central drive system (also called cage drive) provides the rotational force necessary to turn the rake arms in a circular basin through a center cage mechanism, transporting settled solids to the center of the sedimentation tank for removal.

The drive mechanism assembly is mounted on the center column of a sedimentation tank and secured by anchor bolts. The drive mechanism consists of a reduction unit, an integral geared slewing ring and a drive pinion. The steel fabricated housing is protected by a special industrial coating. The drive mechanism is fixed on the center column, whilst the geared slewing ring is attached to the rotating raking mechanism.

The pinion is made from heat-hardened carbonsteel and is mounted on the solid output shaft on the gearbox. The pinion bearings are mounted within the gearbox, preventing any misalignment between gearbox and reduction unit.

Geared slewing ring and pinion within the housing run in an oil bath, which is provided with a seal to prevent contamination. An oil collecting box, level gauge, inspection cover, desiccant breather and drain valve are provided.



Preparation & design

Already from the first design, our engineers can guide you. Assisting with the design, layout, materials, all can be done with the cooperation of the experienced engineers.

As no two sites or projects are alike, early engagement with our engineers, will in the end lead to a top class sludge treatment.

Installation & commissioning

Our teams are renowned for the quality of work in the field. Under any condition, the installation teams are able to deliver high quality and fast solutions. On-site tuning to your specific site characteristics is one of the skills of the team.

The central drive unit can always be installed by our specialised installation teams. Another option is the use of our supervisors, who will ensure proper installation of the central drive, together with a local team.



Refurbishment

We can restore the quality, performance and reliability of any central drive, including those delivered by other manufacturers. This could also lead to a more cost and energy efficient installation than what was originally supplied.

The refurbishment route always starts with an analysis of the current system demands and status of the installation. Then either renovation of the current central drive and parts will be advised or (a partially) renewal. The end result will be the same, an upgraded unit and ready to serve you for the years to come!

After sales

The knowledge of the manufacturing process and the decades of experience of operating and maintaining makes us the clear choice to provide full after sales support. The after sales is not restraint to spare parts only, but includes all from repairs and problem solving, to maintenance, training and upgrades.

We even can optimise and refurbish your existing equipment.

For more information:

AFTERSALES@NOARDLING.NL



Expertise

Using the experience of installing numerous central drives, our team of experts is available for your service. Our staff understand and are able to analyse the complete plant processes in order to increase the effectiveness of any drive unit.

In case of any problems one of our experts can observe, analyse and find the root cause of the problem.

Together with you as a client, the team of experts will work towards finding the solution and solving the issue.

Maintenance

Both preventive and if required, corrective maintenance for the installation, can be provided by us. With a special service department, maintenance routines can be scheduled together, likewise urgent repairs can be handled by us straight away, when and wherever they may occur.

Furthermore, replacement parts are easily available and can be quickly dispatched to your site for quick maintenance, ensuring the all important system up-time is achieved.



Landustrie

Water Treatment Solutions

Landustrie is part of Noardling

PO Box 199, 8600 AD Sneek, The Netherlands

T. +31 (0)515 48 68 88

E. info@noardling.com

W. www.noardling.com

A. Pieter Zeemanstraat 6, Sneek

Our Water Cycle

From water intake systems to water cooling, from water management to wastewater treatment, hydropower, pumping installations, and award-winning innovations in the field of decentralised wastewater treatment, discover the water cycle here by scanning the QR-code.



Noardling

Futureproof Water Technology

The Noardling company is engaged in Futureproof Water Technology. With more than 250 years of experience in moving and treating of water.

Noardling brands:



Desah

Decentralised Wastewater
Solutions



Hubert

Water Screening
Solutions



Landustrie

Water Treatment
Solutions